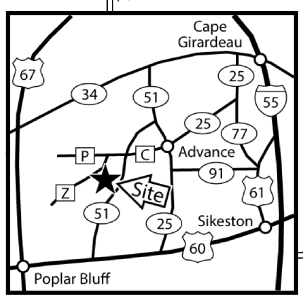
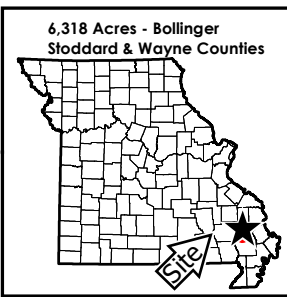




# Duck Creek Conservation Area

Conservation Commission of the State of Missouri ©

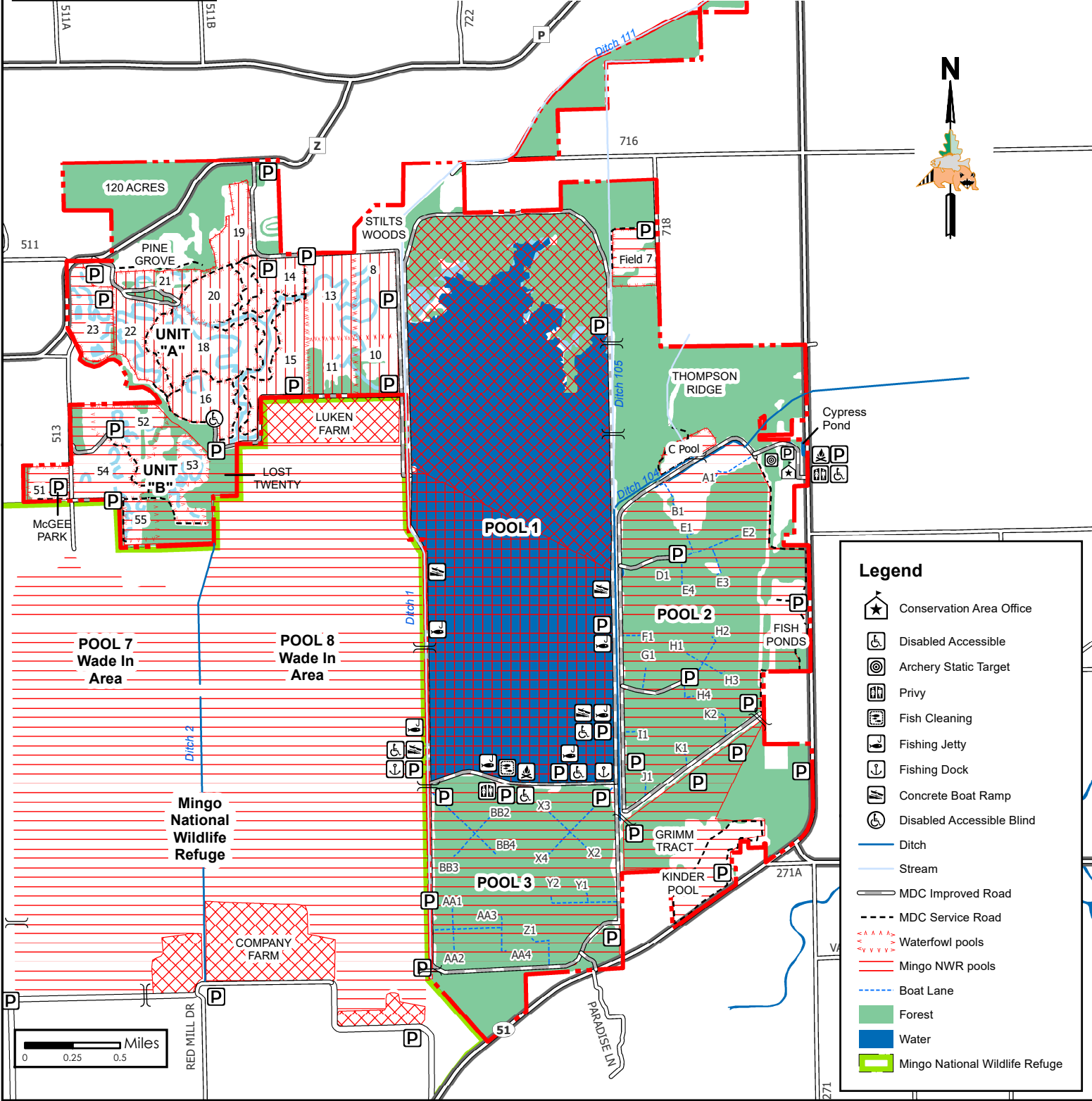
Last Updated - 11/3/2022



## Area Restrictions

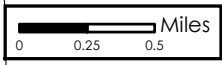
- Waterfowl Refuge (Closed to all uses Oct15. through end of Canada Goose Season)
- Waterfowl Refuge (Closed to all uses Oct. 15 through end of Middle Zone Season)
- Waterfowl Hunting Only Zone (Oct. 15 through end of Canada Goose Season)
- Waterfowl and Archery Hunting Zone (Oct. 15 through end of Middle Zone Season)

*Use or possession of lead shot is prohibited  
Deer hunting by archery methods only*



## Legend

- Conservation Area Office
- Disabled Accessible
- Archery Static Target
- Privy
- Fish Cleaning
- Fishing Jetty
- Fishing Dock
- Concrete Boat Ramp
- Disabled Accessible Blind
- Ditch
- Stream
- MDC Improved Road
- MDC Service Road
- Waterfowl pools
- Mingo NWR pools
- Boat Lane
- Forest
- Water
- Mingo National Wildlife Refuge



MAP DISCLAIMER: Although all data in this map have been compiled by the Missouri Department of Conservation, no warranty, expressed or implied, is made by the department as to the accuracy of the data and related materials. The act of distribution shall not constitute any such warranty, and no responsibility is assumed by the department in the use of these data or related materials.